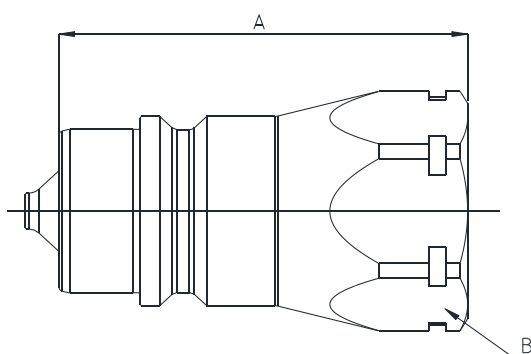


## Q00411041A

BSP TERMINATION ENDS  
TO DIN 3852 X TYPE

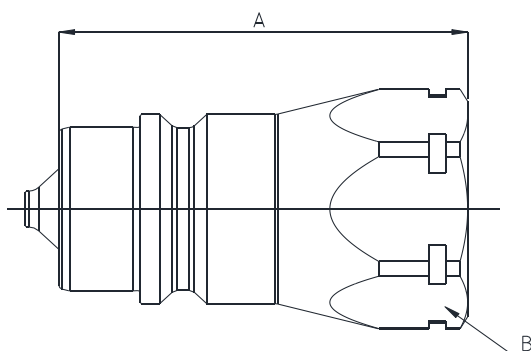
SIZE			PART NUMBER	THREAD	DIMENSIONS mm				
DN	Inch	Dash			Male coupling	A	B		
12.5	1/2"	08	Q00411041A-08-08	1/2"	47	27			



## Q00411341A

NPTF TERMINATION ENDS  
TO ANSI B 1.20.3

SIZE			PART NUMBER	THREAD	DIMENSIONS mm				
DN	Inch	Dash			Male coupling	A	B		
12.5	1/2"	08	Q00411341A-08-08	1/2" NPTF	47	27			



## Q00411301A

SAE TERMINATION ENDS  
TO SAE J1926-1

SIZE			PART NUMBER	THREAD	DIMENSIONS mm				
DN	Inch	Dash			Male coupling	A	B		
12.5	1/2"	08	Q00411301A-08-08	3/4" UNF	47	27			